

# AM4815ZT - EDGE

**Brand:** Dino-Lite  
**Product Code:** AM4815ZT



## Short Description

1.3 Megapixel EDGE sensor  
Versatility due to exchangeable caps  
20-220x magnification  
Polarizer (anti-reflection)  
Ext. Dynamic Range (EDR)  
Ext. Depth of Field (EDOF)

## Description

The Dino-Lite Edge models provide superior image quality and a high level of flexibility due to the adaptable cap design. The built-in adjustable polarizer reduces glare and reflection on shiny objects.



USB 2.0



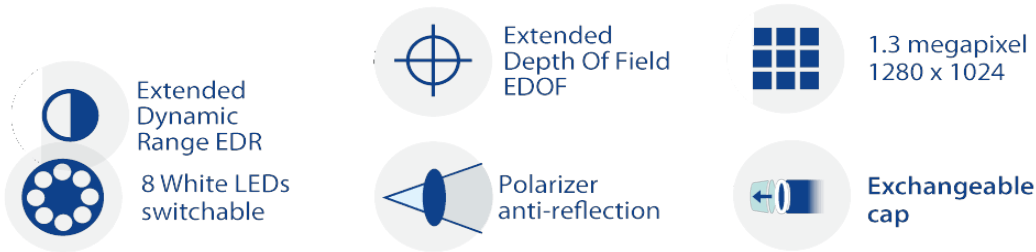
Measurement  
functionality



Adjustable  
~20x-220x



Magnification  
lock



With the Extended Dynamic Range (EDR) feature, the details of darker or brighter areas within the object can be revealed by stacking images at different exposure levels. The Extended Depth of Field (EDOF) feature automatically stacks images at different focus level to improve the depth of field on rough or uneven surfaces. Different caps are supplied with the microscope making the Dino-Lite Edge the perfect choice for any professional application.

(\*At the moment EDR/EDOF only functions under Windows OS)

» Also available: AM4815T - Edge without Polarizer

**Working distance/field of view/depth of field**

MAGNIFICATION RATE	WORKING DISTANCE 1	WORKING DISTANCE 2*	FIELD OF VIEW(X)	FIELD OF VIEW(Y)	DEPTH OF FIELD
<b>Listed values may differ slightly</b>		<b>* Without front cap</b>			<b>Unit = mm</b>
20	52.7	60.2	19.5	15.6	2.5
30	26.0	33.5	13.0	10.4	1.8
40	13.4	20.9	9.8	7.8	1.5
50	6.4	13.9	7.8	6.3	-
60	2.2	9.7	6.5	5.2	-
70	-	7.1	5.6	4.5	1.0
80	-	5.5	4.9	3.9	-
90	-	4.5	4.3	3.5	-
100	-	4.1	3.9	3.1	-
110	-	4.0	3.6	2.8	-
120	-	4.1	3.3	2.6	-
130	-	4.5	3.0	2.4	-
140	-	5.0	2.8	2.2	-
150	-	5.6	2.6	2.1	-

160	-	6.3	2.4	2.0	-
170	-	7.1	2.3	1.8	-
180	0.5	8.0	2.2	1.7	-
190	1.4	8.9	2.1	1.6	-
200	2.4	9.9	2.0	1.6	-
210	3.4	10.9	1.9	1.5	-
220	4.4	11.9	1.8	1.4	0.1

## Specification

Lighting	
Light/ LED type	White
Number of LEDs	8
LED on/off switchable:	Yes
Infrared filter	IR cut-filter >650 nm
Diffuser available	Yes (N3C-D included)
Emission filter	No
Polarizer	Yes, linear
Optics	
Magnification	20-220x
Macro zoom	No
Working distance	Standard
Lens type	Glass with anti-reflection coating
Sensor	
Sensor type	CMOS
Resolution	1.3 Megapixel (1280x1024)
Maximum frame rate	30 fps
Compatibility	
Interface	USB 2.0
Operating system	Windows 7,8,10 & 11, MacOS 10.9 and up
Included software	DinoCapture 2.0 (Windows), DinoXcope (Mac OS)
Supported image formats (Windows)	BMP, GIF, PNG, JPG, TIF, RAS, PNM, TGA, PCX, MNG, WBMP, JP2, JPC, PGX
Supported video formats (Windows)	WMV, FLV, SWF
Imaging standards	DirectShow, UVC
Wifi	Wireless-ready, requires the WF-10 WiFi streamer (optional)
Housing	
Housing material	Metal housing

Magnification lock	Yes
Dimensions	10.5cm (L) x 3.2cm (D)
Weight	105g
Cable length	1.8m
<b>Features</b>	
Special feature	Extended Dynamic Range (EDR), Extended Depth of Field (EDOF)
Measurement	Yes
Calibration	Yes
Microtouch sensor	Yes
ESD safe	No
<b>Information</b>	
Package contents	Microscope, carry pouch, software CD, calibration target, user manual, N3C-O- Open cap, N3C-C- Closed cap, N3C-D- Diffuser cap, N3C-E- Extension cap, N3C-L- Long cap, N3C-S- Side light cap
Warranty information	2 years European warranty
Regulatory approval	CE, FCC, ROHS
Price range	€800,00 - €1000,00

## Product Gallery

### AM4815ZT

Butterfly with EDOF



CPU pins with EDOF



### AM4815ZT

with EDOF



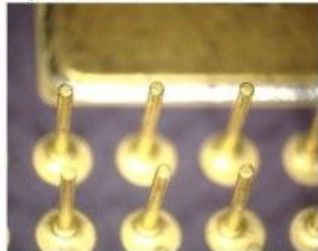
with EDOF



Butterfly without EDOF



CPU pins without EDOF



without EDOF



without EDOF



